

# Bridgewater Sport

IDENTITY  
SERIES

5 - 6 BEDROOM  
5 BATHROOM  
5,052 - 5,420 FINISHED SF



ELEVATION A ■■■■



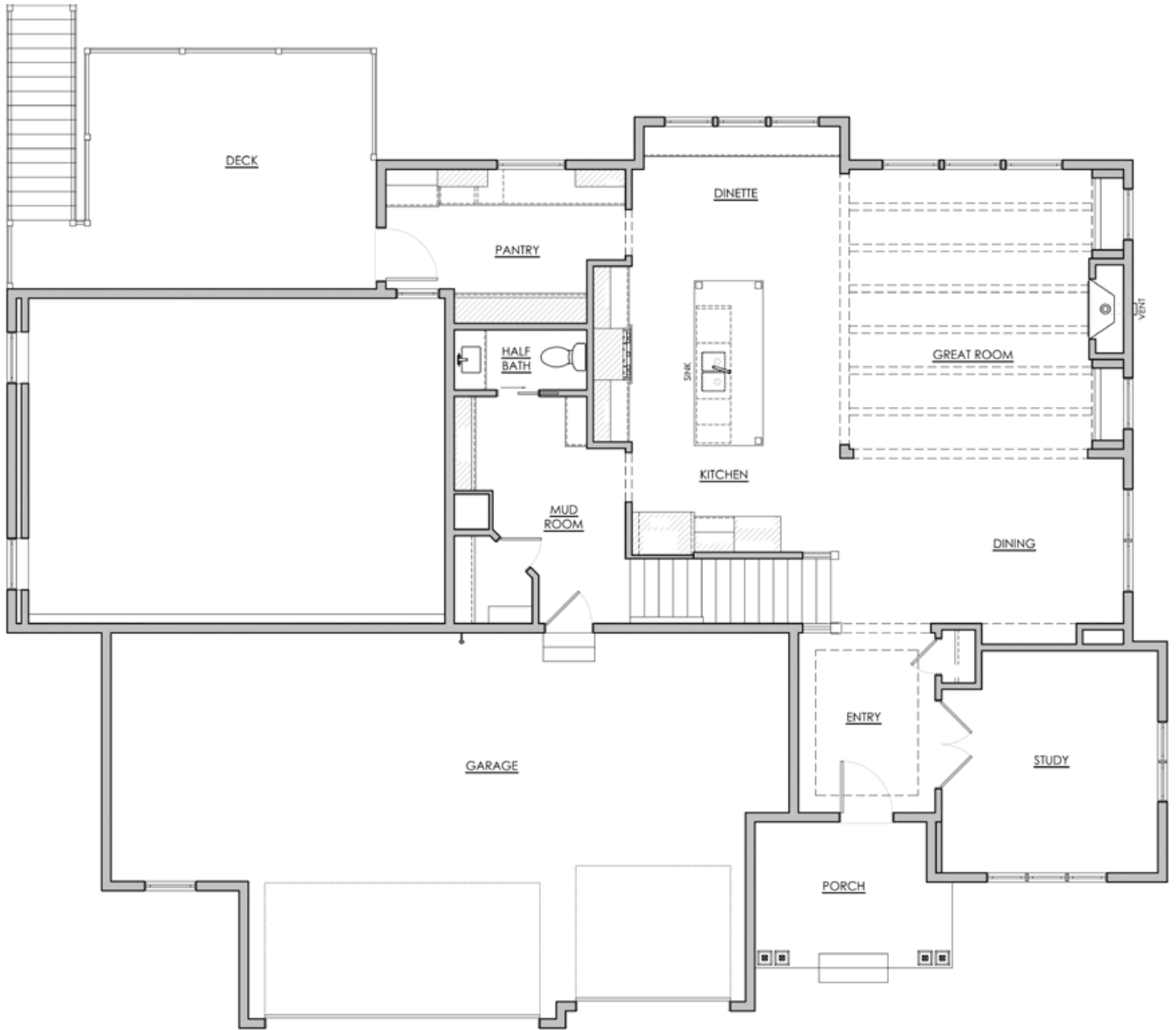
ELEVATION B ■■■■

HANSON  
■■■ BUILDERS ■■■

# Main Level

Bridgewater Sport IDENTITY SERIES

1,453 FINISHED SF  
9' CEILINGS

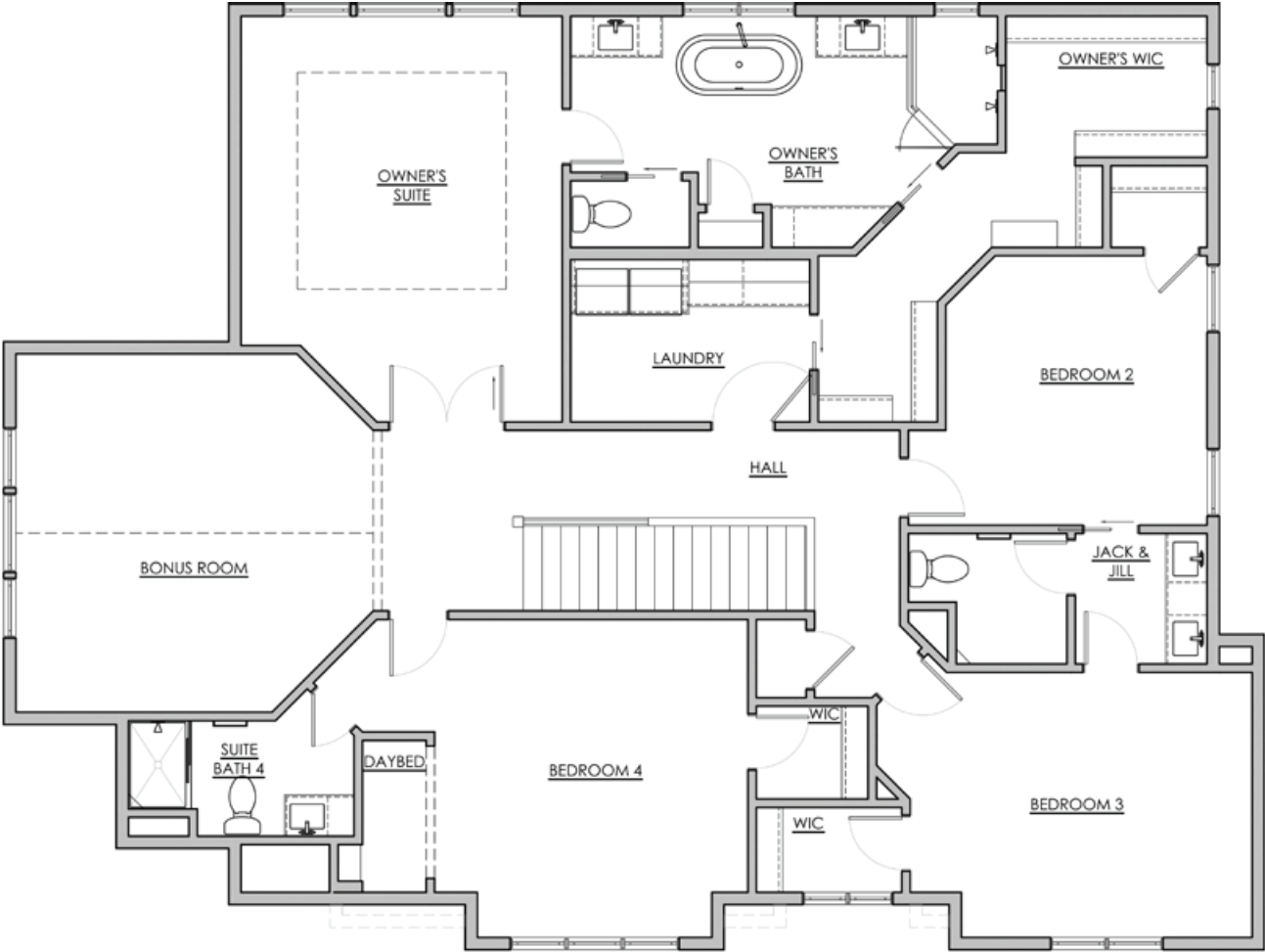


\*NOTE: Plan dimensions and square footage numbers are approximate, actual plans may vary slightly.

# Upper Level

Bridgewater Sport IDENTITY SERIES

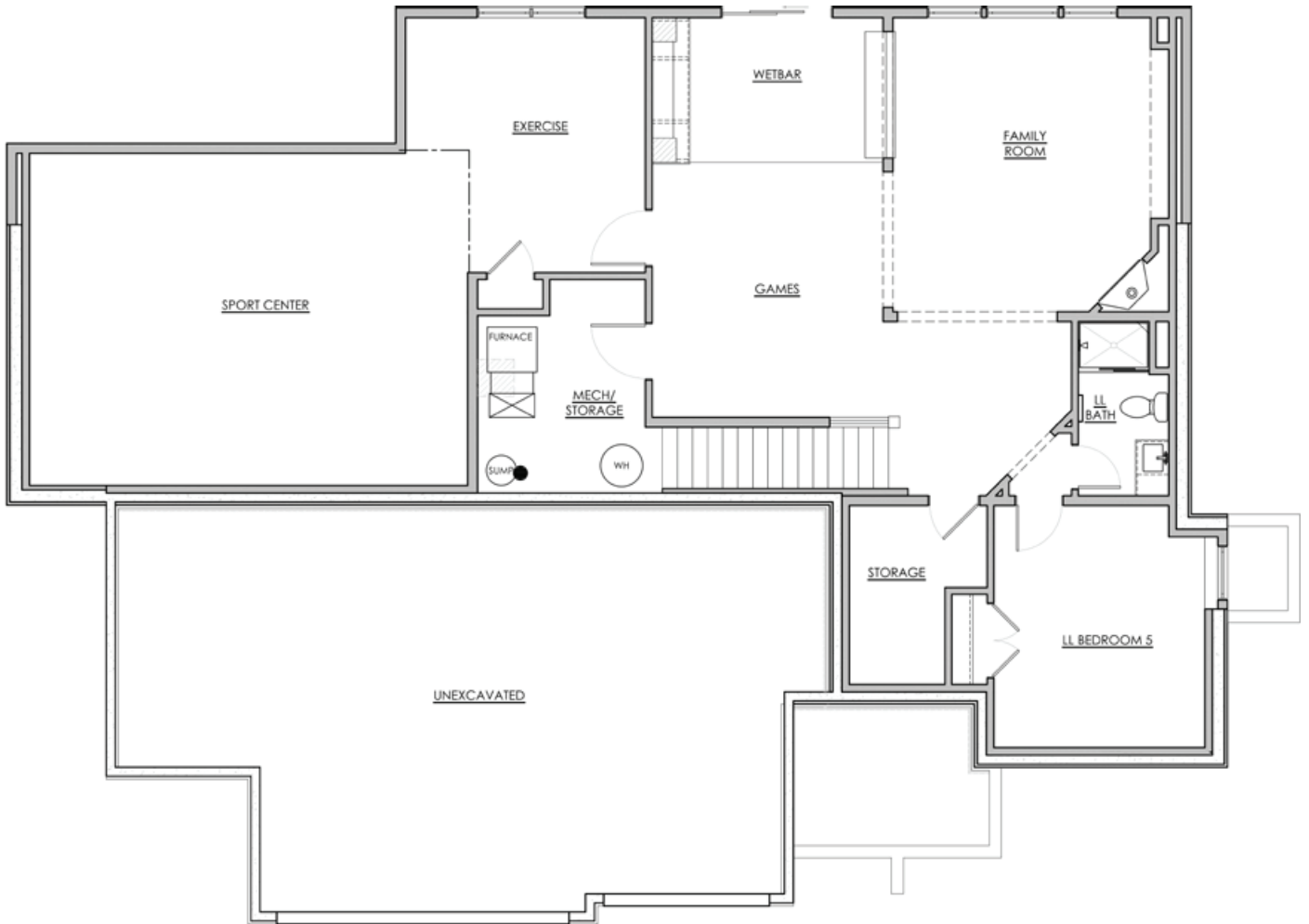
1,835 FINISHED SF  
8' CEILINGS



\*NOTE: Plan dimensions and square footage numbers are approximate, actual plans may vary slightly.

# Lower Level

1,062 FINISHED SF  
702 SPORT CENTER  
8' CEILINGS



<b>Upper:</b>	1,835	<b>Garage:</b>	TBD
<b>Main:</b>	1,453	<b>Unfinished:</b>	166
<b>Lower:</b>	1,062		
<b>Sport Center:</b>	702	<b>House Width:</b>	67' - 6"
<b>Total Finished:</b>	5,052 - 5,420		

<b>Opt. Sunroom:</b>	170		
<b>Opt. Bonus:</b>	198		

UPDATED 8/30/2023

\*NOTE: Plan dimensions and square footage numbers are approximate, actual plans may vary slightly.



[hansonbuilders.com](http://hansonbuilders.com) | 763-286-2509